



Eaton MD™
MOBILE DIAGNOSTICS

MD-300 Series

The Virtual Heavy-Duty Truck Technician

Eaton MD-300 PC Diagnostic Software

This Eaton MD-300 Series PC Diagnostic software quickly locates and diagnoses the complex problems that affect heavy-duty commercial vehicle electronic systems.

Features

- Three diagnostic functions in one software package
 - Data Monitoring
 - Retrieves fault codes
 - Data Reporting
- Only software on the market that monitors several truck components simultaneously
- Graphic Vehicle Interface (GVI) displays vehicle components and their status. Graph up to four components individually or up to 15 collectively!
- Includes a patent-pending PID search that saves time and eliminates confusion
- Create custom diagnostics and save set-ups
- E-mail or print reports directly from software
- Easy export of data for further analysis
- Easily accessible SAE Database information
- Allows for web-based software upgrades
- Quickly create, save and retrieve Vehicle Service Reports with various query abilities

Compatible Standards

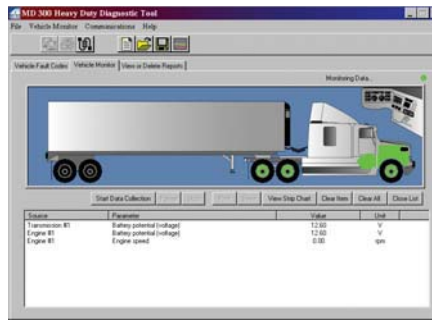
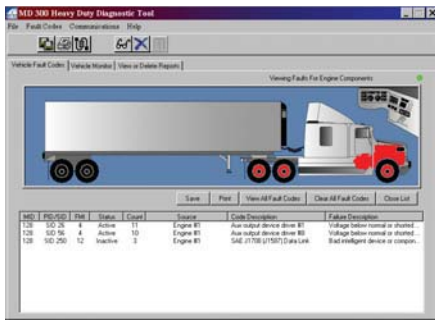
Heavy-Duty Protocols

J1587/J1708

The screenshot displays the MD-300 Heavy Duty Diagnostic Software interface. At the top, there is a menu bar with 'File', 'Fault Codes', 'Settings', and 'Help'. Below the menu bar, there are icons for home, search, and help. The main window is titled 'Viewing Faults For Transmission Components' and features a graphic of a white truck with a green trailer. Below the truck graphic, there is a table of fault codes.

MID	PID/SID	FHR	Status	Count	Source	Code Description	Failure Description
130	SID 231	2	Inactive	1	Transmission #1	SAE J1323 IFS	Data erratic, intermittent, or incor.
130	PID 161	2	Active	1	Transmission #1	Input shaft speed	Data erratic, intermittent, or incor.
130	SID 39	5	Active	2	Transmission #1	Shift finger rail actuator #1	Current below normal or open cir.
130	SID 40	5	Active	2	Transmission #1	Shift finger gear actuator #1	Current below normal or open cir.
130	PID 60	2	Inactive	1	Transmission #1	Shift finger rail position	Data erratic, intermittent, or incor.
130	PID 59	2	Inactive	1	Transmission #1	Shift finger gear position	Data erratic, intermittent, or incor.
130	SID 36	3	Inactive	1	Transmission #1	Range low indicator	Voltage above normal or shorted

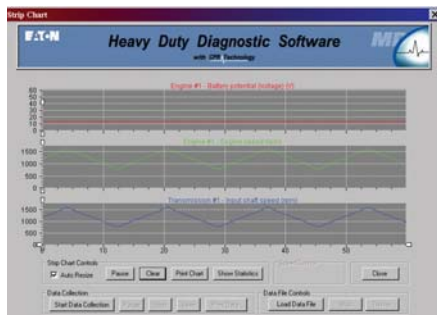
Eaton MD-300 PC Diagnostic Software



The MD-300 is the only diagnostic software on the market that includes a Graphic Vehicle Interface (GVI) that **visually** displays what components are reporting fault codes. Red indicates an active fault code, yellow indicates an inactive fault code, and green indicates no fault codes. You can instantly determine if a failure is affecting more than one system on the vehicle!

Based on these fault codes, MD Tools patented search technology filters out hundreds of unnecessary parameters, allowing the technicians to choose from only those parameters that correspond to the affected component for quicker diagnosis. For more complicated problems, technicians can view 15 parameters at once.

Need an easier way to document vehicle information, fault codes and repair histories? The MD-300 provides it at the touch of a button with Vehicle Service Reports. MD Tools software automatically enters the date and *all* fault codes. You can save, print or email these reports with ease!



Not only does the MD-300 collect data, but it gives you the option of charting this information for faster problem identification and more thorough diagnostics. You can graph this data as you receive it, or you can graph saved information.

System Requirements

A PC should meet the following minimum configuration:

- IBM® PC-compatible computer – Pentium III or equivalent
- 64 Meg of RAM
- 800 x 600 screen resolution
- CD-ROM drive
- 100 megabyte of free space on hard drive
- Operates on Windows 95, 98, 2000, XP, ME and NT

Communication Adapters

The following RP-1210A compliant communications adapters for vehicle diagnostics are recommended:

- Eaton MD-100 series Vehicle Link Adapters

Eaton MD-300 heavy-duty diagnostic software can use any RP1210A compatible communication adapter.

How To Order

For your convenience you can contact us by phone at **248-200-0400** or visit our website at www.diagnosticinnovations.com

Roadranger
MORE TIME ON THE ROAD.

Eaton Corporation
Roadranger Parts Marketing
P.O. Box 4013
Kalamazoo, MI 49003
U.S.A.

©Eaton Corporation
2004 All rights reserved
APSL-0300 9/04
2.5M/WP
Printed in USA

EAT•N

